



THE INSTITUTION OF FIRE ENGINEERS

FOUNDED 1918 • INCORPORATED 1924

The International Organisation
for Fire Professionals



THE INSTITUTION OF FIRE ENGINEERS

FOUNDED 1918 • INCORPORATED 1924

Improving fire safety world-wide by the exchange of knowledge

FIG UK Seminar – “Mind the Gap in Fire Information: Update
2016”

Wednesday, 26 October 2016

Martin Shipp

IFE International President Elect

Fire Safety Group, BRE Global



THE INSTITUTION OF FIRE ENGINEERS

FOUNDED 1918 • INCORPORATED 1936

The International Organisation
for Fire Professionals

Introduction

- In June/July 2017 I become IFE International President.



THE INSTITUTION OF FIRE ENGINEERS

FOUNDED 1918 • INCORPORATED 1936

The International Organisation
for Fire Professionals

Introduction

- In June/July 2017 I become IFE International President.
- I believe that I am the first fire scientist to become IP.



THE INSTITUTION OF FIRE ENGINEERS

FOUNDED 1918 • INCORPORATED 1996

The International Organisation
for Fire Professionals

Introduction

- In June/July 2017 I become IFE International President.
- I believe that I am the first fire scientist to become IP.
- No one will be surprised to hear that I want to do things differently for my year!



THE INSTITUTION OF FIRE ENGINEERS

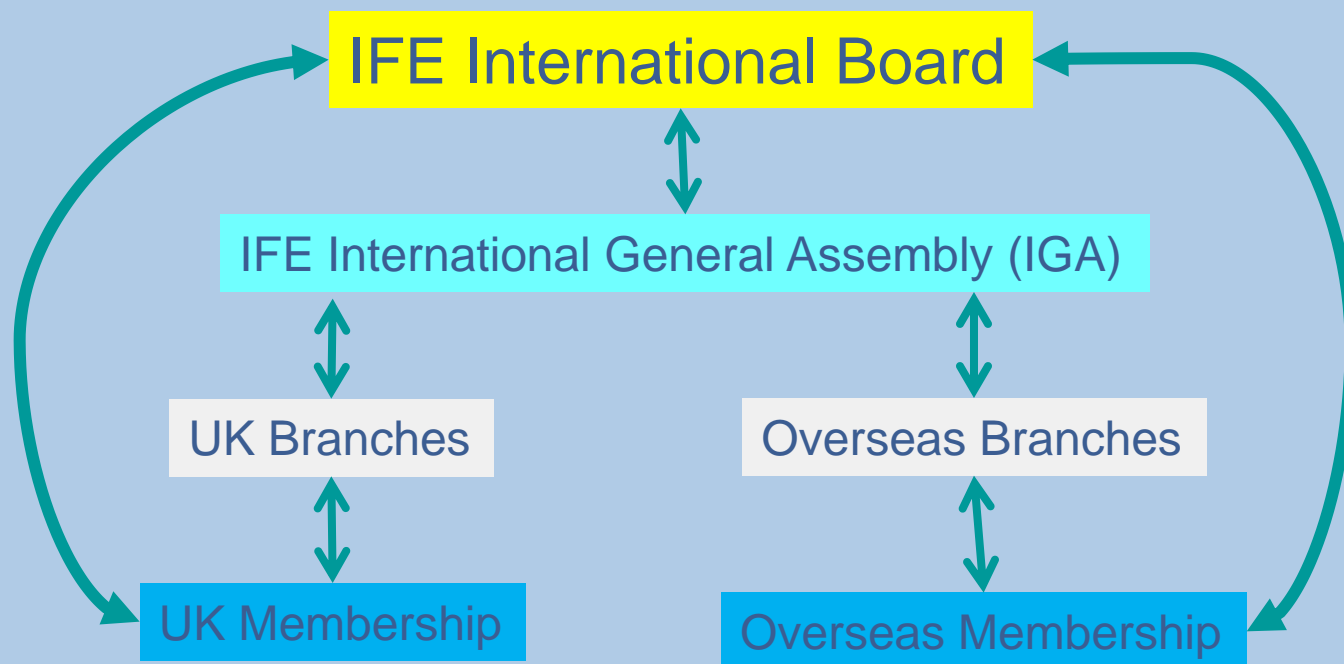
FOUNDED 1918 • INCORPORATED 1936

The International Organisation
for Fire Professionals

A bit about the IFE

Membership approx. 10,000

UK = 5,500 - Overseas = 4,500



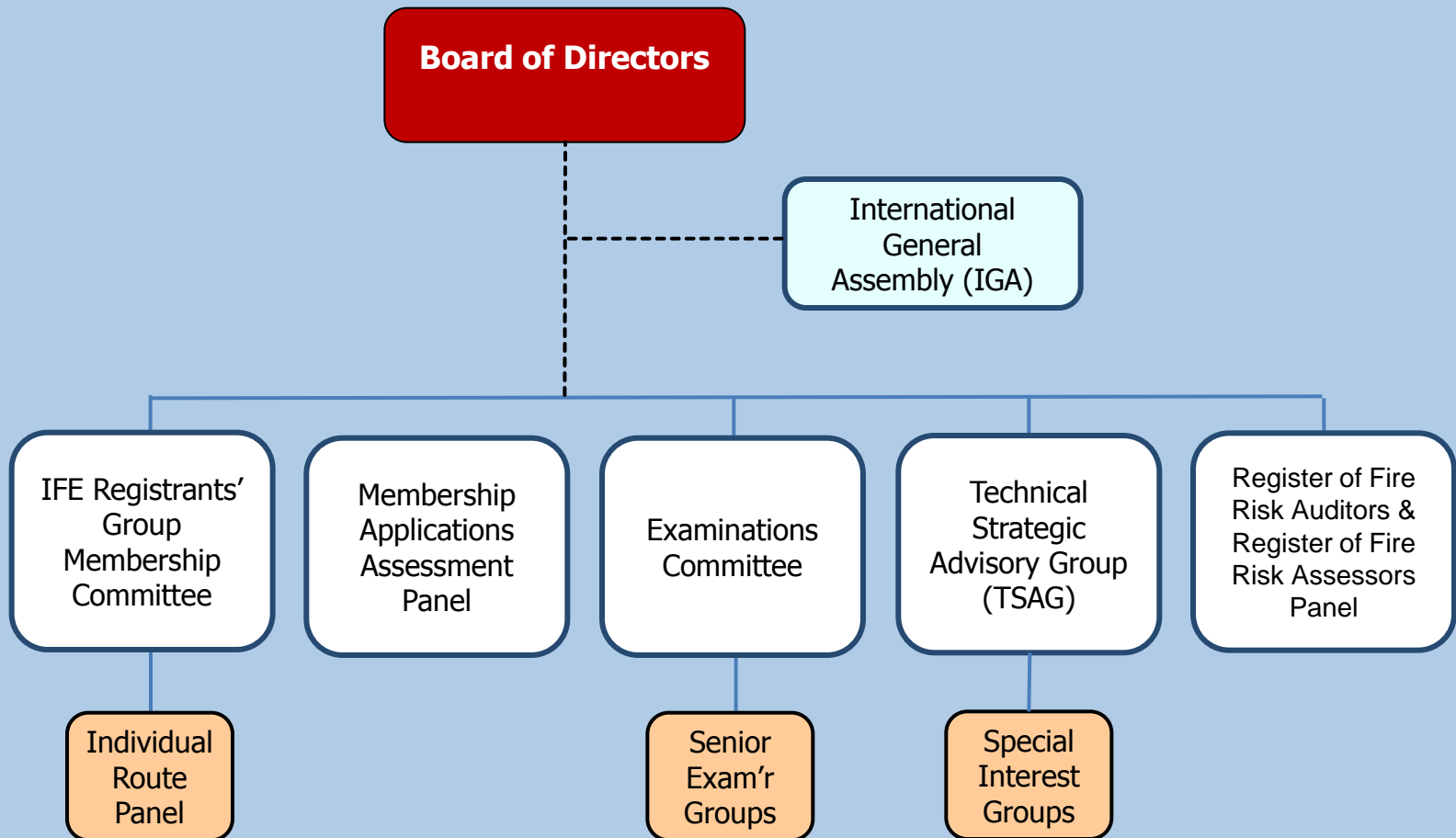


THE INSTITUTION OF FIRE ENGINEERS

FOUNDED 1918 • INCORPORATED 1924

The International Organisation
for Fire Professionals

IFE governance structure



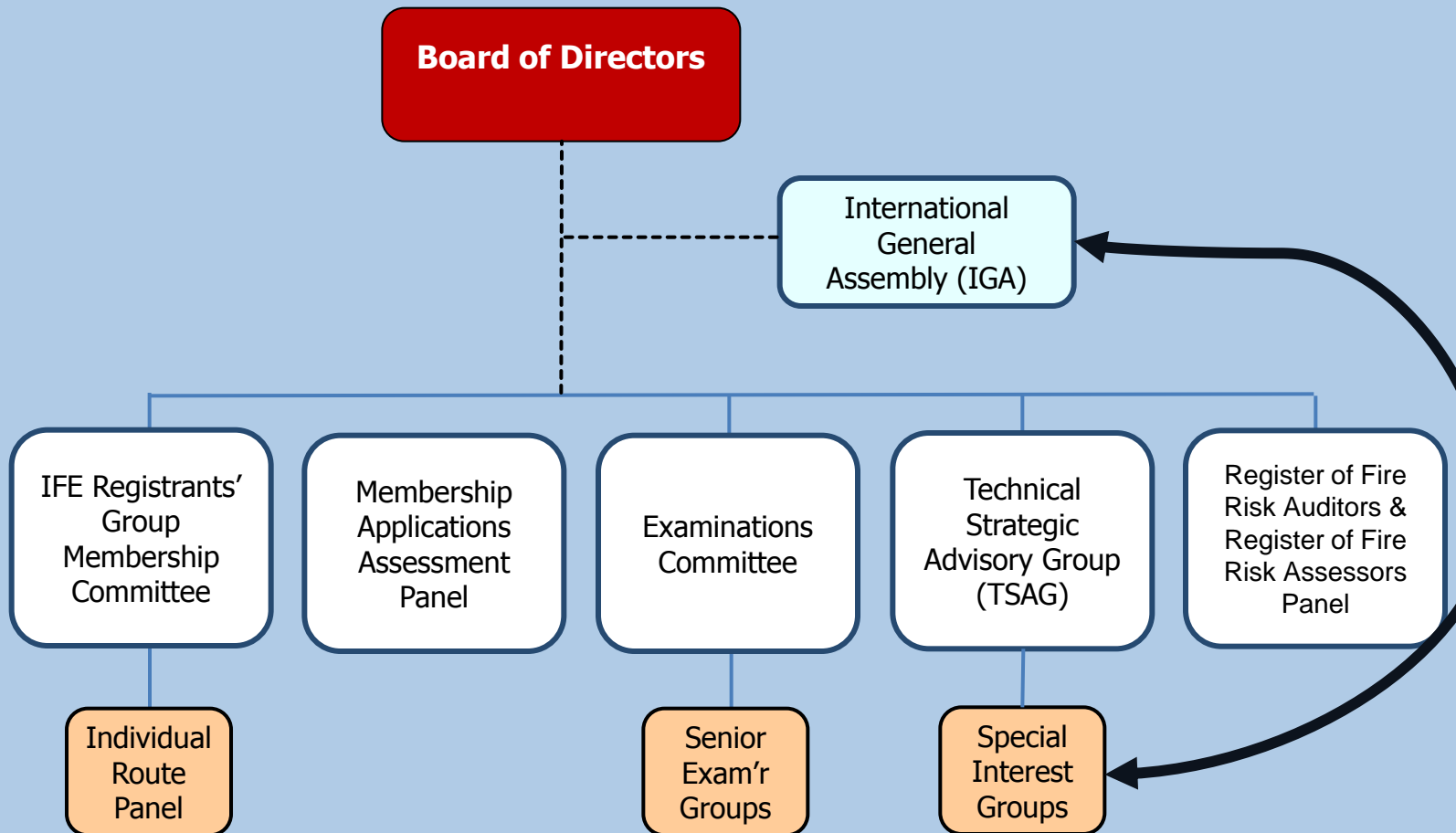


THE INSTITUTION OF FIRE ENGINEERS

FOUNDED 1918 • INCORPORATED 1924

The International Organisation
for Fire Professionals

IFE governance structure





THE INSTITUTION OF FIRE ENGINEERS

FOUNDED 1918 • INCORPORATED 1936

The International Organisation
for Fire Professionals

The IFE's Mission (from 1918)

To promote, encourage and improve the science and practice of fire extinction, fire prevention and fire engineering, and all operations and expedients connected therewith, and to give an impulse to ideas likely to be useful in connection with or in relation to such science and practice to the members of the Institution and the community at large.



THE INSTITUTION OF FIRE ENGINEERS

FOUNDED 1918 • INCORPORATED 1936

The International Organisation
for Fire Professionals

The IFE's Mission (from 1918)

To promote, encourage and improve **the science and practice of fire extinction, fire prevention and fire engineering**, and all operations and expedients connected therewith, and to give an impulse to ideas likely to be useful in connection with or in relation to such science and practice to the members of the Institution and the community at large.



THE INSTITUTION OF FIRE ENGINEERS

FOUNDED 1918 • INCORPORATED 1936

The International Organisation
for Fire Professionals

The IFE

A charity managed for fire professionals by fire professionals, with the aim of promoting, encouraging and improving the science, practice and professionalism of fire engineering.

Our vision

A global organisation of fire professionals striving to build a safer society.

Our mission

To promote, encourage and improve the science, practice and professionalism of fire engineering.

Our values

Inclusivity, professionalism, value, learning, responsibility, independence and openness.



THE INSTITUTION OF FIRE ENGINEERS

FOUNDED 1818 • INCORPORATED 1924

The International Organisation
for Fire Professionals

Facts and figures 2016

- Almost 10,000 members across the world
- Almost 3,000 MIFireE members
- Over 500 FIFireE members
- Over 1,000 Affiliate members
- Active LinkedIn group – over 2,500 individuals
- **Over 500 Engineering Council registrants**
- Almost 200 registered Fire Risk Assessors in the UK
- 110 exam centres across the world
- Over 7,000 IFE papers being sat globally
- Turnover exceeded £1million for last 3 years



THE INSTITUTION OF FIRE ENGINEERS

FOUNDED 1918 • INCORPORATED 1936

The International Organisation
for Fire Professionals

UK Branches

United Kingdom





THE INSTITUTION OF FIRE ENGINEERS

FOUNDED 1818 • INCORPORATED 1836

The International Organisation
for Fire Professionals

International Branches

International





THE INSTITUTION OF FIRE ENGINEERS

FOUNDED 1918 • INCORPORATED 1996

The International Organisation
for Fire Professionals

International members

International





THE INSTITUTION OF FIRE ENGINEERS

FOUNDED 1812 • INCORPORATED 1894

The International Organisation
for Fire Professionals

The role of the International President

- A “Figurehead”
- Ambassador
- Leading the Mission
- Encouraging Branches
- Separate from Chairman or Chief Executive



THE INSTITUTION OF FIRE ENGINEERS

FOUNDED 1812 • INCORPORATED 1894

The International Organisation
for Fire Professionals

IP Visits

International





THE INSTITUTION OF FIRE ENGINEERS

FOUNDED 1812 • INCORPORATED 1836

The International Organisation
for Fire Professionals

My aspirations

To seek to rectify the fact that, despite an IFE membership in around 60 different countries (and around 20 non-UK Branches), less than a half of these are represented at our AGM or the IGA.

.



THE INSTITUTION OF FIRE ENGINEERS

FOUNDED 1918 • INCORPORATED 1996

The International Organisation
for Fire Professionals

My aspirations

To seek to rectify the fact that, despite an IFE membership in around 60 different countries (and around 20 non-UK Branches), less than a half of these are represented at our AGM or the IGA.

To seek to ensure that the knowledge held by our members is disseminated to those Branches that need help.



THE INSTITUTION OF FIRE ENGINEERS

FOUNDED 1918 • INCORPORATED 1996

The International Organisation
for Fire Professionals

My intention

International





THE INSTITUTION OF FIRE ENGINEERS

FOUNDED 1918 • INCORPORATED 1936

The International Organisation
for Fire Professionals

Outline programme

Day 1 am - Icebreaker, objectives, outcomes.

Day 1 - Workshop 1: **what are your real fire safety problems?**

Day 1 pm - Plenary: findings and discussion.

Day 1 pm - Preparation for Day 2.

Day 2 am - Workshop: **what are the solutions to your fire safety problems?**

Day 2 pm - Plenary: findings and discussion.

Day 2 pm - Wash up. What happens next? How do we develop this opportunity?



THE INSTITUTION OF FIRE ENGINEERS

FOUNDED 1918 • INCORPORATED 1936

The International Organisation
for Fire Professionals

Topics to explore.

What are the fire problems in each country?



THE INSTITUTION OF FIRE ENGINEERS

FOUNDED 1918 • INCORPORATED 1936

The International Organisation
for Fire Professionals

Topics to explore.

What are the fire problems in each country?

- Do we already have solutions? What are they?



THE INSTITUTION OF FIRE ENGINEERS

FOUNDED 1812 • INCORPORATED 1894

The International Organisation
for Fire Professionals

Topics to explore.

What are the fire problems in each country?

- Do we already have solutions? What are they?
- What new knowledge is needed? How might it be obtained?



THE INSTITUTION OF FIRE ENGINEERS

FOUNDED 1918 • INCORPORATED 1936

The International Organisation
for Fire Professionals

Topics to explore.

What are the fire problems in each country?

- Do we already have solutions? What are they?
- What new knowledge is needed? How might it be obtained?
- How do we ensure knowledge is shared and exchanged?



THE INSTITUTION OF FIRE ENGINEERS

FOUNDED 1918 • INCORPORATED 1936

The International Organisation
for Fire Professionals

Topics to explore.

What is actually happening:

- Actual causes of death and injury from fire, and how these compare with other causes of death and injury.
- Actual fire losses; financial, business, historical, cultural, environmental, social, educational – and how non-financial fires losses might be quantified.
- Actual risks of death and injury from fire, and how these compare with other risks of death and injury (trips, falls, disease, car accidents, tsunamis, volcanos, meteorites, etc.)



THE INSTITUTION OF FIRE ENGINEERS

FOUNDED 1918 • INCORPORATED 1936

The International Organisation
for Fire Professionals

Topics to explore

What is actually
happening?

CTIF World fire statistics 2016

Table/Таблица/Tabelle 7
Trends in fire deaths in the countries of the World in 2010-2014
Динамика числа жертв пожаров в странах мира за 2010-2014
Dynamik der Brandtotezahlen in den Staaten für die Jahre 2010-2014

N	Country	Population, thous. inh.	Number of fire deaths					Average number		
			2010	2011	2012	2013	2014	per year	per 100,000 inh.	per 100 fires
	Страна	Население, тыс. чел.	Число погибших					Среднее число		
			2010	2011	2012	2013	2014	в год	на 100 тыс.чел.	на 100 пожаров
	Staat	Einwohner in 1.000	Anzahl der Brandtoden					Mittelwert		
			2010	2011	2012	2013	2014	Je Jahr	Je 100.000 Einw.	Je 100 Brände
1	USA	318 907	3 120	3 005	2 855	3 420	3 275	3 135	1,0	0,2
2	Russia	144 000	13 061	11 962	11 652	10 548	10 068	11 458	8,0	7,0
3	Japan	128 130	-	1 766	1 721	1 625	1 678	1 698	1,3	3,7
4	Vietnam	93 000	68	75	78	45	90	71	0,1	3,3
5	Germany	82 218	373	376	-	-	-	375	0,5	0,2
6	France	66 030	438	459	362	321	280	372	0,6	0,1
7	Great Britain	61 370	388	388	380	350	322	366	0,6	0,1
8	Italy	61 000	74	79	257	-	-	137	0,2	0,1
9	Spain	47 021	192	-	-	-	-	192	0,4	0,2
10	Ukraine	43 001	2 819	2 869	2 751	2 494	2 246	2 636	6,1	4,1
11	Poland	38 462	525	585	564	515	493	536	1,4	0,4
12	Romania	20 121	247	224	222	-	-	231	1,1	0,8
13	Kazakhstan	17 000	528	488	518	455	401	478	2,8	3,0
14	Netherlands	16 820	-	-	-	-	75	75	0,4	0,1
15	Portugal	11 000	0	-	-	-	-	0	0,0	0,0
16	Greece	10 788	-	48	49	33	-	43	0,4	0,2
17	Belgium	10 700	-	-	70	48	-	59	0,6	0,3
18	Czech Republic	10 505	131	-	125	111	114	120	1,1	0,4
19	Hungary	9 877	112	136	140	112	94	119	1,2	0,6
20	Sweden	9 556	-	102	103	96	-	100	1,0	0,5
21	Belarus	9 481	1 120	483	927	783	737	810	8,5	3,3
22	Austria	8 544	39	30	30	20	-	30	0,3	0,1
23	Bulgaria	7 245	79	122	93	106	103	93	1,3	0,7
24	Serbia	7 187	81	85	-	62	73	75	1,0	0,2
25	Denmark	5 603	74	64	65	-	-	68	1,2	0,2
26	Kyrgyzstan	5 522	64	84	87	62	-	74	1,3	0,3
27	Slovakia	5 412	41	53	44	-	-	46	0,8	0,3
28	Finland	5 398	80	66	77	58	86	73	1,4	1,7
29	Norway	5 109	65	46	40	62	54	53	1,0	0,4
30	Singapore	5 000	0	4	1	4	-	2	0,0	0,0
31	Ireland	4 581	38	38	-	-	-	38	0,8	0,5
32	New Zealand	4 405	34	17	-	-	-	26	0,6	0,6
33	Croatia	4 290	26	49	36	-	21	33	0,8	0,1
34	Moldova	3 553	185	168	150	120	118	148	4,2	1,0
35	Kuwait	3 415	19	21	21	17	-	20	0,6	0,2
36	Mongolia	2 997	65	84	75	53	59	67	2,2	3,4
37	Lithuania	2 943	233	-	150	160	125	167	5,7	3,2
38	Slovenia	2 063	16	14	8	0	0	8	0,4	0,2
39	Latvia	2 001	144	122	99	104	94	113	5,6	0,9
40	Estonia	1 313	69	73	54	47	54	59	4,5	1,2
41	Cyprus	858	6	16	2	5	-	7	0,8	0,1
42	Liechtenstein	37	-	-	0	0	0	0	0,0	0,0
Total/Всего/Gesamt:		1 288 483	24 664	24 201	23 788	21 838	20 880	24 210	1,8	0,7



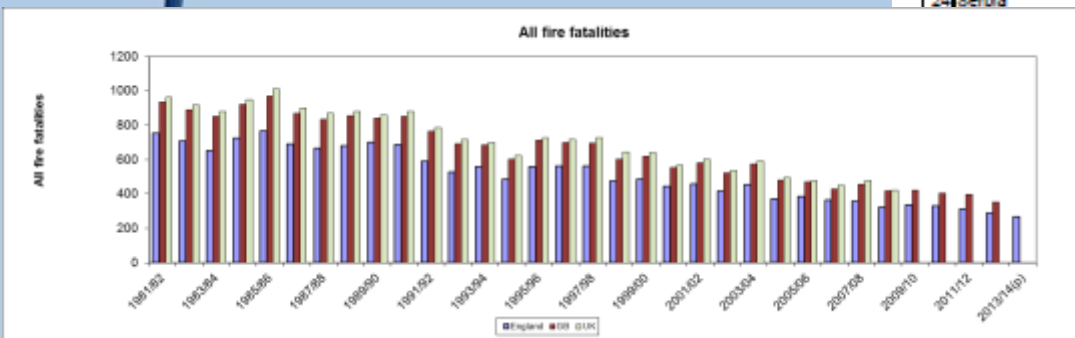
THE INSTITUTION OF FIRE ENGINEERS

FOUNDED 1812 • INCORPORATED 1894

The International Organisation
for Fire Professionals

Topics to explore

What is actually
happening?



Table/Таблица/Tabelle 7
Trends in fire deaths in the countries of the World in 2010-2014
Динамика числа жертв пожаров в странах мира за 2010-2014
Dynamik der Brandtotenanzahlen in den Staaten für die Jahre 2010-2014

N	Country	Population, thous. inh.	Number of fire deaths					Average number			
			2010	2011	2012	2013	2014	per year	per 100,000 inh.	per 100 fires	
	Страна	Население, ты. чел.	Число погибших					Среднее число			
			2010	2011	2012	2013	2014	в год	на 100 ты.чел.	на 100 пожаров	
Staat	Einwohner in 1.000	Anzahl der Brandtoten					Mittelwert				
		2010	2011	2012	2013	2014	Je Jahr	Je 100.000 Einw.	Je 100 Brände		
1	USA	318 907	3 120	3 005	2 855	3 420	3 375	3 135	1,0	0,2	
2	Russia	144 000	13 061	11 962	11 652	10 548	11 458	11 458	8,0	7,0	
3	Japan	128 130	-	1 766	1 721	1 625	1 698	1 698	1,3	3,7	
4	Vietnam	93 000	68	75	78	45	90	71	0,1	3,3	
5	Germany	82 218	373	376	-	-	375	375	0,5	0,2	
6	France	66 030	438	459	362	321	360	372	0,6	0,1	
7	Great Britain	61 370	388	388	380	350	320	366	0,6	0,1	
8	Italy	61 000	74	79	257	-	-	137	0,2	0,1	
9	Spain	47 021	192	-	-	-	-	192	0,4	0,2	
10	Ukraine	43 001	2 819	2 869	2 751	2 494	2 245	2 636	6,1	4,1	
11	Poland	38 462	525	585	564	515	455	536	1,4	0,4	
12	Romania	20 121	247	224	222	-	-	231	1,1	0,8	
13	Kazakhstan	17 000	528	488	518	455	401	478	2,8	3,0	
14	Netherlands	16 820	-	-	-	-	75	75	0,4	0,1	
15	Portugal	11 000	0	-	-	-	-	0	0,0	0,0	
16	Greece	10 788	-	48	49	33	-	43	0,4	0,2	
17	Belgium	10 700	-	-	70	48	-	59	0,6	0,3	
18	Czech Republic	10 505	131	-	125	111	114	120	1,1	0,4	
19	Hungary	9 877	112	136	140	112	95	119	1,2	0,6	
20	Sweden	9 556	-	102	103	96	-	100	1,0	0,5	
21	Belarus	9 481	1 120	483	927	783	737	810	8,5	3,3	
22	Austria	8 544	39	30	30	20	1	30	0,3	0,1	
23	Bulgaria	7 245	79	122	53	106	493	93	1,3	0,7	
24	Serbia	7 187	81	85	-	62	51	75	1,0	0,2	
			5 603	74	64	65	-	68	1,2	0,2	
			5 522	64	84	87	62	74	1,3	0,3	
			5 412	41	53	44	-	46	0,8	0,3	
			5 398	80	66	77	58	66	73	1,4	1,7
			5 109	65	46	40	62	54	53	1,0	0,4
			5 000	0	4	1	4	-	2	0,0	0,0
			4 581	38	38	-	-	38	0,8	0,5	
			4 405	34	17	-	-	26	0,6	0,6	
			4 290	26	49	36	-	21	33	0,8	0,1
			3 553	185	168	150	120	148	4,2	1,0	
			3 415	19	21	21	17	-	20	0,6	0,2
			2 997	65	84	75	53	55	67	2,2	3,4
			2 943	233	-	150	160	125	167	5,7	3,2
			2 063	16	14	8	0	0	8	0,4	0,2
39	Latvia	2 001	144	122	99	104	94	113	5,6	0,9	
40	Estonia	1 313	69	73	54	47	55	59	4,5	1,2	
41	Cyprus	858	6	16	2	5	-	7	0,8	0,1	
42	Liechtenstein	37	-	-	0	0	0	0	0,0	0,0	
Total/Всего/Gesamt:			1 288 483	24 664	24 201	23 788	21 838	20 880	24 210	1,8	0,7



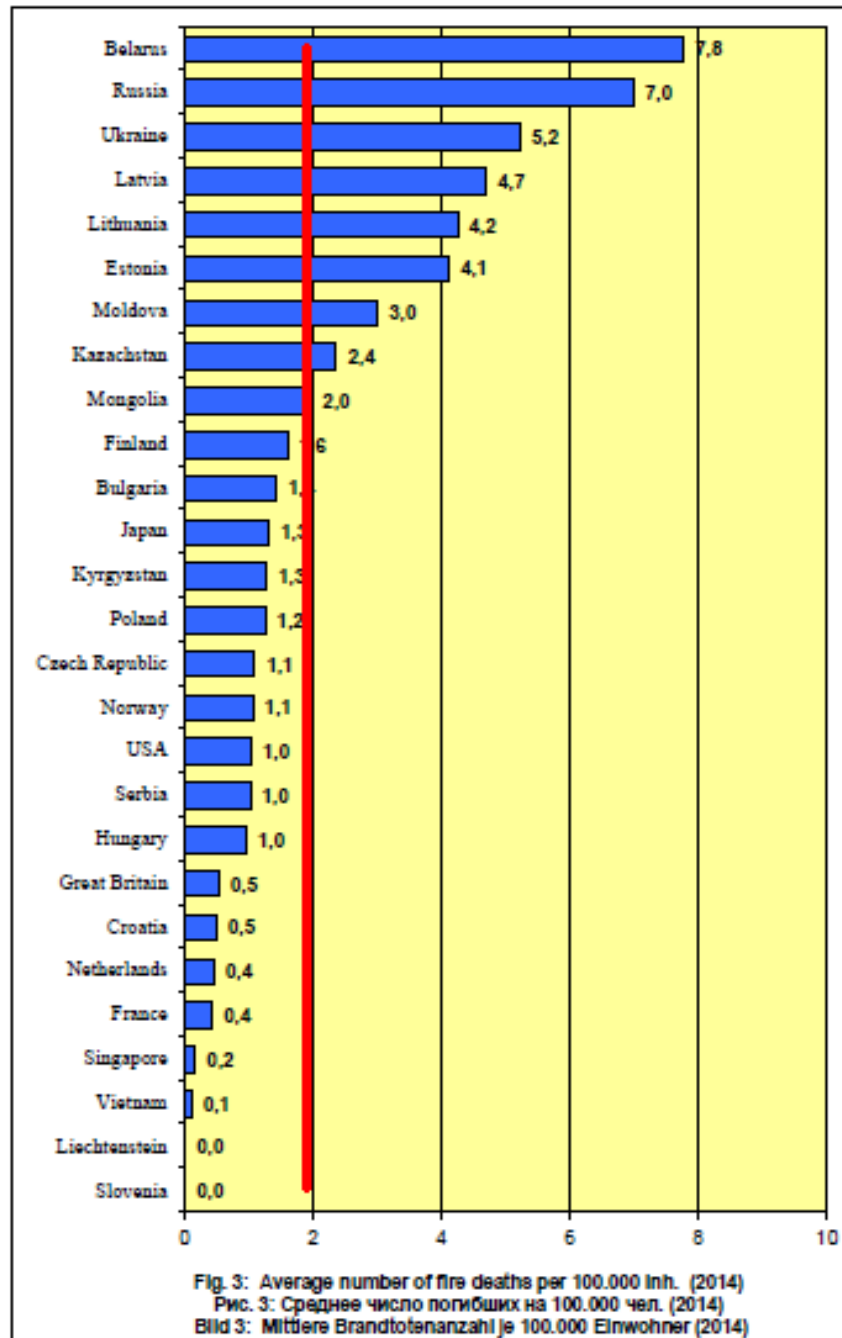
THE INSTITUTION OF FIRE ENGINEERS

FOUNDED 1918 • INCORPORATED 1936

The International Organisation
for Fire Professionals

Topics to expl

What is actually
happening?





THE INSTITUTION OF FIRE ENGINEERS

FOUNDED 1918 • INCORPORATED 1936

The International Organisation
for Fire Professionals

Topics to explore

- New and evolving risks: pollution, contagion, extreme weather, food shortages, terrorism, etc...





THE INSTITUTION OF FIRE ENGINEERS

FOUNDED 1918 • INCORPORATED 1936

The International Organisation
for Fire Professionals

Topics to explore

- Quality in construction; the role of regulations, inspection, maintenance.





THE INSTITUTION OF FIRE ENGINEERS

FOUNDED 1812 • INCORPORATED 1894

The International Organisation
for Fire Professionals

Topics to explore

- The impact of climate change on the fire service, fire engineering, the fire industry etc.



THE INSTITUTION OF FIRE ENGINEERS

FOUNDED 1918 • INCORPORATED 1996

The International Organisation
for Fire Professionals

Topics to explore

- The impact of changing societies on the fire service, fire engineering, the fire industry etc.





THE INSTITUTION OF FIRE ENGINEERS

FOUNDED 1818 • INCORPORATED 1836

The International Organisation
for Fire Professionals

Topics to explore

- The impact of changing demographics (e.g. aging population, obesity) on the fire service, fire engineering, the fire industry etc.





THE INSTITUTION OF FIRE ENGINEERS

FOUNDED 1918 • INCORPORATED 1996

The International Organisation
for Fire Professionals

Topics to explore

- The impact of new technologies on the fire service, fire engineering, the fire industry etc.



With the permission of Bodo Wolters





THE INSTITUTION OF FIRE ENGINEERS

FOUNDED 1918 • INCORPORATED 1936

The International Organisation
for Fire Professionals

Topics to explore

- The impact of new construction technologies on the fire service, fire engineering, the fire industry etc.





THE INSTITUTION OF FIRE ENGINEERS

FOUNDED 1918 • INCORPORATED 1936

The International Organisation
for Fire Professionals

Topics to explore

- The role of IFE in training (for the fire industry) and education (for the public)?
- Should the IFE have a public education programme?
- Or via links with other professional engineering institutions, fire organisations, etc.
- Should the IFE have a children's education programme?





THE INSTITUTION OF FIRE ENGINEERS

FOUNDED 1818 • INCORPORATED 1894

The International Organisation
for Fire Professionals

Potential outcomes

- Identify research needs.
- Facilitate research.



THE INSTITUTION OF FIRE ENGINEERS

FOUNDED 1812 • INCORPORATED 1894

The International Organisation
for Fire Professionals

Potential outcomes

- Identify research needs.
- Facilitate research.
- Disseminate knowledge.
- Exploit our International reach – in particular to help countries that need help.



THE INSTITUTION OF FIRE ENGINEERS

FOUNDED 1812 • INCORPORATED 1894

The International Organisation
for Fire Professionals

Potential outcomes

- Identify research needs.
- Facilitate research.
- Disseminate knowledge.
- Exploit our International reach – in particular to help countries that need help.
- Determine the future role of the IFE.



THE INSTITUTION OF FIRE ENGINEERS

FOUNDED 1918 • INCORPORATED 1996

The International Organisation
for Fire Professionals

IFE Centenary October 2018

- A party with a purpose!
- ‘Saving Children from Fire’.
- Intended to use the momentum of the event (publicity etc) to raise fire awareness in young people, and an understanding of fire risks and fire prevention.



THE INSTITUTION OF FIRE ENGINEERS

FOUNDED 1918 • INCORPORATED 1936

The International Organisation
for Fire Professionals

IFE Centenary October 2018

- Celebrations will track around the world from New Zealand to Scotland and will be recorded by video and transmitted to the Conference and celebrations by satellite/skype. All Branches will be encouraged to be involved.



THE INSTITUTION OF FIRE ENGINEERS

FOUNDED 1918 • INCORPORATED 1936

The International Organisation
for Fire Professionals

IFE Centenary October 2018

- Celebrations will track around the world from New Zealand to Scotland and will be recorded by video and transmitted to the Conference and celebrations by satellite/skype. All Branches will be encouraged to be involved.
- AGM/Conference; Edinburgh (where IFE was founded)
- Ideas welcome!



THE INSTITUTION OF FIRE ENGINEERS

FOUNDED 1818 • INCORPORATED 1896

The International Organisation
for Fire Professionals

Thank you

Martin Shipp

Technical Development Director, Fire Safety

T: +44 (0) 1923 664960 F: +44 (0) 1923 664910

E: shippm@bre.co.uk W: www.bre.co.uk/fire

BRE Global, Garston, Watford WD25 9XX, UK

IFE:

<http://www.ife.org.uk/>