

2nd International Fire Information Conference 30-31 May 2002, London, UK

Jeanine Driessens
ANPI-NVBB

Association Nationale pour la Protection
contre l'Incendie et l'Intrusion



The experience of a librarian involved in the development of the software ELID

Jeanine Driessens
ANPI-NVBB

Association Nationale pour la Protection
contre l'Incendie et l'Intrusion



History ... "A l'Innovation"



- BRUSSELS, 22 May 1967:
- 253 fatalities and thousand injured



ANPI is

- a partner for the development of new regulations and standards
- connected with all the professionals of the fire protection world
- plays a role of focal point



Aerial photo



ANPI often plays a role of focal point. Our advice and hints published in dossiers or articles are often recognised as a code of practice, even if ANPI doesn't publish official requirements.

Fire brigades from all the country often recommend an ANPI publication written in 1996 by Jan Peelaerts, a fire officer, to risk managers that have to produce an intervention document.

ANPI PUBLICATIONS



- Plan d'intervention et d'évacuation : 1 /Morrens Luc ; Peelaerts Jan ; Smets Rudi - Louvain-la-Neuve (B) : ANPI-NVBB, 1996 - (Dossier technique, DT 113)
- Plan d'intervention et d'évacuation : 2 /Morrens Luc ; Peelaerts Jan ; Smets Rudi - Louvain-la-Neuve (B) : ANPI-NVBB, 1996 - (Dossier technique, DT 114)



CEGEKA

- SEAS = Safety And Environmental Accounting System
- Platform providing multifunctional online software package for the management of hazardous substances and preparations



ELID

- = Elektronisch Interventie Dossier
- (Electronic Intervention Dossier)
- creating standard intervention dossier
- electronic exchange format
- ELID intervention module - 50 windows with text and pictograms
- ELID map module - create and adapt your maps and schema with the necessary pictograms.



CEGEKA required assistance :

- To introduce ELID to the fire brigades and impose ELID as a “unofficial” standard to the fire brigades and industries.
- To commercialise ELID

Usually ANPI only suggests the use of commercial product. But, has

- considered electronic exchange of documents as an asset for the future.
- seen in ELID further development with exchange between fire brigades, insurers and fire inspection bodies



6. Installations d'extinction

Installations d'extinction

Il y a une installation sprinkler dans tout le bâtiment

Appareils d'extinction

Dans le dépôt kérosène il y a un extincteur à poudre automatique

Enrouleurs mureaux

Il y a des hydrants et des extincteurs dans tout le bâtiment



7. Construction

Construction

La construction est réalisée en maçonnerie

Murs extérieurs

Toit

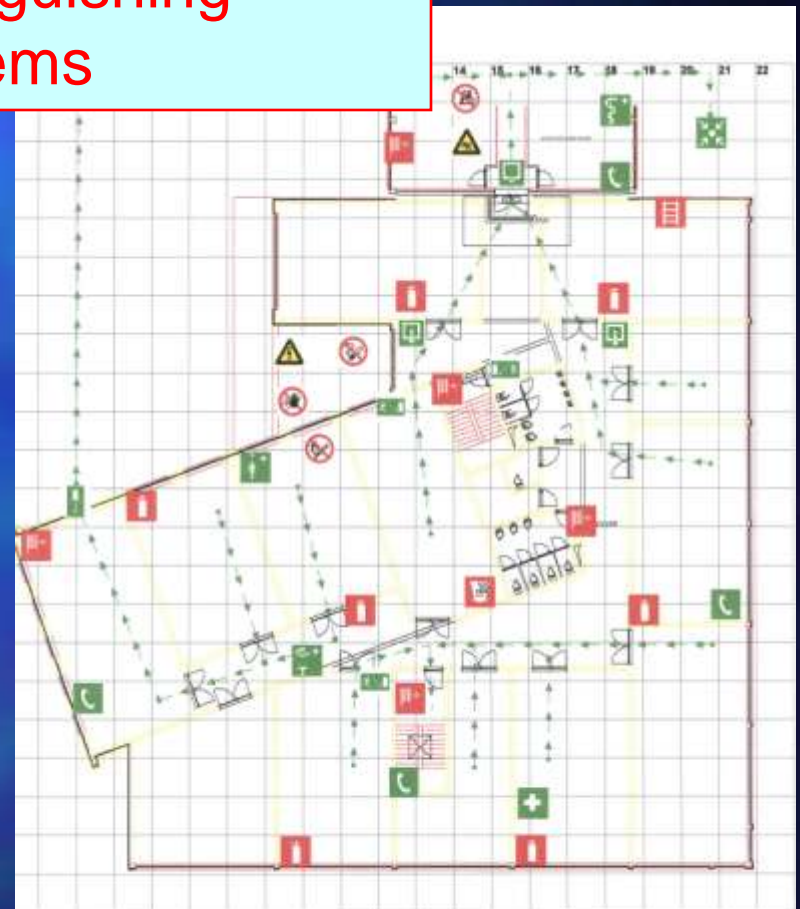
L'intérieur du toit est couvert d'un matériel ignifuge

Contrevents de fumée

Les volets de fumée se trouvent dans le hall d'entrée

- 11 -

Information about
automatic
extinguishing
systems



ANPI_NVBB_DEMO

Doc. 12345	Version de travail	Date 25-07-2001
------------	--------------------	-----------------



ASSESSMENT OF ELID

User-friendly:

- 📖 easy to use,
- 📖 language,
- 📖 terminology.

Benefits and advantages:

- 📖 the potential customer.

Potential to upgrade the software and the **ability** to create new outputs.

Price.



New ELID

- = Electronic fire information file
- **Structural and relational database**
- Data about the:
 - enterprise's activities and organisation
 - the buildings at different levels (area, buildings, sectors, fire compartments and rooms)
 - about people and contacts (suppliers, fitters, inspection bodies, fire brigades...).



The objectives of new ELID can be definite as an electronic assistant for the management of fire protection useful for private and public enterprises.



All our attention was given to the contents and to the links between the data instead of the form. Forms and reports will be treated later.



DIFFERENT TYPE OF LINKS

- Links
 - between the data's inside ELID
 - to an extern calculator running with ELID
 - Example:
 - an equipment and the supplier
 - an agenda (a calculator sending alert messages when it is time to proceed to an inspection, a control, a maintenance or a training)
- Diagrammatic connections: A red arrow points from the text 'an equipment and the supplier' to 'between the data's inside ELID'. Another red arrow points from the text 'an agenda (a calculator sending alert messages...)' to 'to an extern calculator running with ELID'.



DIFFERENT TYPE OF LINKS

- Links
- Links with external calculator without connection with ELID
- Example:
 - fire risk evaluation method FRAME (data will be downloaded from ELID. After the processing by the calculator, the data are loaded back and the contents of the fields eventually adapted).



DIFFERENT KIND OF LINKS

- Connection with information sources

- web sites

- bibliographical references or addresses of experts.

Example:

- fields "obligation" is connected the web site of ANPI.

- list of fire loads
(Méthode d'évaluation des risques SIA)



DIFFERENT KIND OF LINKS

- Links
- to checklist or log books

- Example:

← pages of the Logbook published by the FPA



Exemple « Sprinkler »

at/secteur/ compartiment	N	Sprinkler			
			Obligatoire		Link web ANPI
			Conforme à		Link web ANPI
			Générale / locale		
			Localisation		Link plan
			Schéma		Link autres
			Type de têtes		
			Matériel certifié ANPI		
				N° certificat	
			Installateur		
				Agrément BOSEC	Link web BOSEC
			Inspection		Link AGENDA Link LOG BOOK
			Entretien / maintenance		Link AGENDA Link LOG BOOK
			Contrôle		Link AGENDA
					Link autres fichier ANPI
				Remarques	

Role of the librarian

- Multidisciplinary (brings a new vision - great overview of the problem)
- Multilingual
- Multimedia and Internet user
- Immediate input of available information
- A guide
- A teacher



But most of all,
librarians save time!



Bibliografy

- Evaluation des risques / De Smet E. Louvain-la-Neuve (B) : ANPI-NVBB, 1988 - (Dossier technique, DT 73)
 - Méthode FRAME Fire Risk Assessment Method for Engineering
- Plan d'intervention et d'évacuation : 1 /Morrens Luc ; Peelaerts Jan ; Smets Rudi - Louvain-la-Neuve (B) : ANPI-NVBB, 1996 - (Dossier technique, DT 113)
- Plan d'intervention et d'évacuation : 2 /Morrens Luc ; Peelaerts Jan ; Smets Rudi - Louvain-la-Neuve (B) : ANPI-NVBB, 1996 - (Dossier technique, DT 114)



Contacts

- ANPI-NVBB - Parc scientifique Fleming - 1348 Louvain-la-Neuve - Belgium - www.anpi-nvbb.be
- CEGEKA - Universiteitslaan 9 - 3500 Hasselt - Belgium - www.cegeka.com
- LJD CONSULT - Léon Rousseau - Cammaertstraat 41 - 1933 Sterrebeek - Belgium - leon.rousseau@village.uunet.be
- Erik DESMET - Nachtegaaldreef 60 - 9040 Gent - Belgium - <http://www.geocities.com/frame-method>

